

UNION CHAIN DIVISION - CEMENT PLANTS

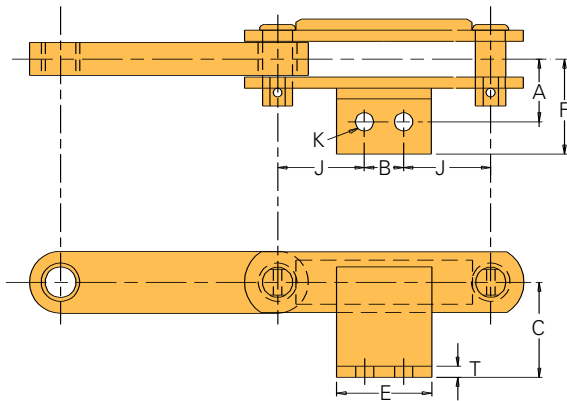
Stack Reclaimers

Stack Reclaimers are popular when heavy industrial processes require that large storage piles of lump material are necessary. Reclaimer chain and flight assemblies function like scraper conveyors, less the trough, with flight blades that push material toward a belt feeding conveyor. The reclaimer conveyor's chain with digging flights are supported by rails and structure which span over or across the pile being reclaimed for transfer to plant processes.

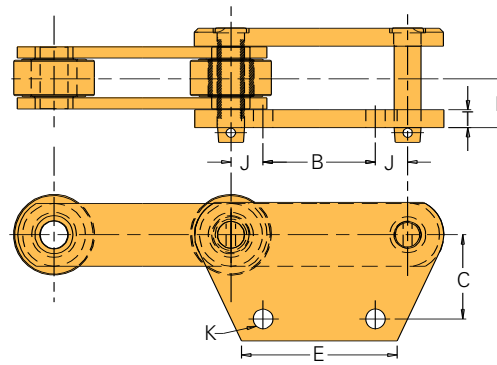
Chain for this demanding application should provide the longest service life to achieve the best overall value. Chain must have large bearing areas, high hardnesses and deep case depths to provide the best performance. Union Chain Division engineers have used these principles while retrofitting many reclaiming conveyors with chain and sprockets, achieving service life which is longer than O.E.M. chains. For the superior value and performance, Union Chain is your best choice.

B - INDUSTRY APPLICATIONS

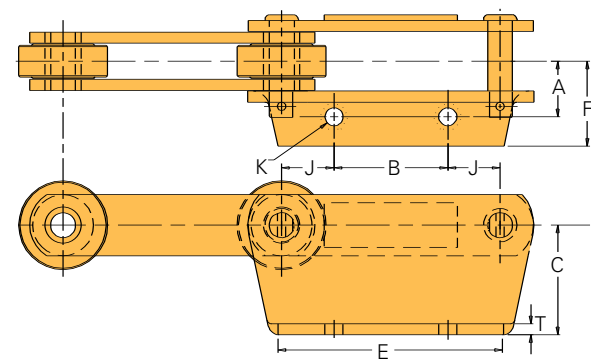
22568



22535



22220



Reclaimer Chains

All dimensions are in inches unless otherwise indicated.

Drawing Number	Pitch	A	B	C	E	F	J	K	T
22568	9.843	2.85	1.77	4.31	4.31	4.31	4.04	.83	.50
22535	9.843		6.26	4.69	8.65	2.11	1.79	1.09	1.00
22220	9.843	2.50	5.12	4.94	10.15	3.82	2.36	.81	.50

Note: Reclaimer chains are normally manufactured on a made-to-order basis. A few standard styles are shown above.