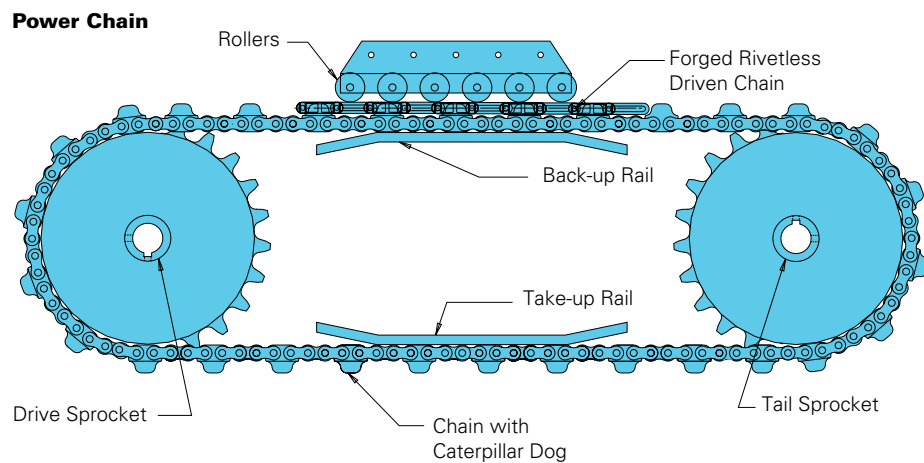
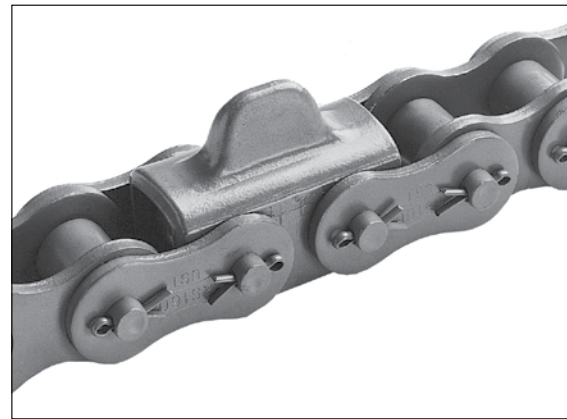


# UNION CHAIN DIVISION - DROP FORGED RIVETLESS CHAINS

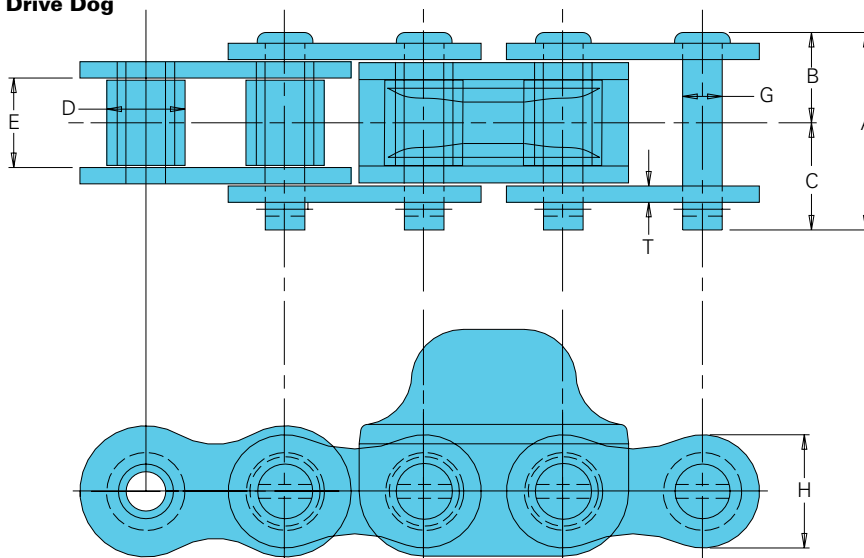
A - ENGINEERING CLASS CHAINS

## Caterpillar Drive (Power) Chains

Caterpillar Drive Chains are vital in driving drop forged chain conveyors, so they must deliver fatigue-free operation. The Union Caterpillar Drive Chain features high-quality roller chain with drive dogs made of one-piece forged, induction-hardened steel. The entire assembly is designed to operate flawlessly in combination with our forged rivetless chain. Our chain also meets ANSI standards.



**Drive Dog**



**Caterpillar Drive Chain**

All dimensions are in inches unless otherwise indicated.

Chain Number	Pitch	Chain Width				Diameter		Sidebars		Drive Dog Pitch Spacing	Avg. Ult. Strength (lbs.)	Approx. Weight (lbs./ft.)
		Overall	Pin Head to CL	Pin End to CL	Inside Width	Roller	Pin	Thickness	Height			
		A	B	C	E	D	G	T	H			
160/348	2.000	2.64	1.23	1.41	1.25	1.13	.56	.25	1.90	6	58,000	8.3
160/458	2.000	2.64	1.23	1.41	1.25	1.13	.56	.25	1.90	4 or 6	58,000	8.3 or 10.0
160/678	2.000	2.64	1.23	1.41	1.25	1.13	.56	.25	1.90	6	58,000	9.8

Indicates this chain is normally stocked. All others are made-to-order.

Note: Power chains are available with "cam yokes" (normally every 4th pitch) or outboard rollers (normally every 6th pitch).

To locate compatible sprockets for your chain, refer to the Product Cross-Reference in Section D.

Note: Dimensions are subject to change. Contact Union Chain to obtain certified prints for design and construction.